

How To : The ICAO levels template tool

Introduction

ID station will test every photo before it is printed or saved. This test is called the **ICAO Test** because the test is based on the official ICAO specifications. ICAO (International Civil Aviation Organization) has documented the official specifications for passport photos.

The ICAO levels template tool is a tool that allows you to modify the ICAO Test function by editing ICAO level **templates**.

If, for example, you are taking *Facebook* photos that need not comply to ICAO standards you can create an ICAO level template that is less strict than the default template. If you want to completely disable the ICAO Test, please read the "*How to : The ICAO Test feature*".

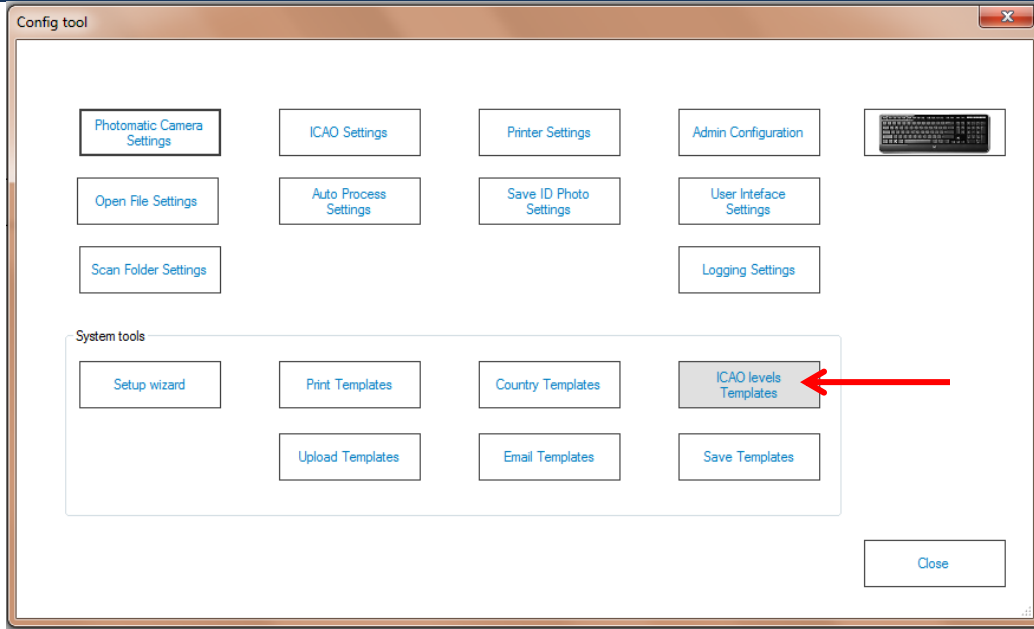
The ICAO levels template tool allows you to **disable** any ICAO test and change the **rejection level** of any test. The rejection level is the score that will cause the photo to be rejected. By changing this level you can fine-tune the ICAO Test.

Start the ICAO levels template tool

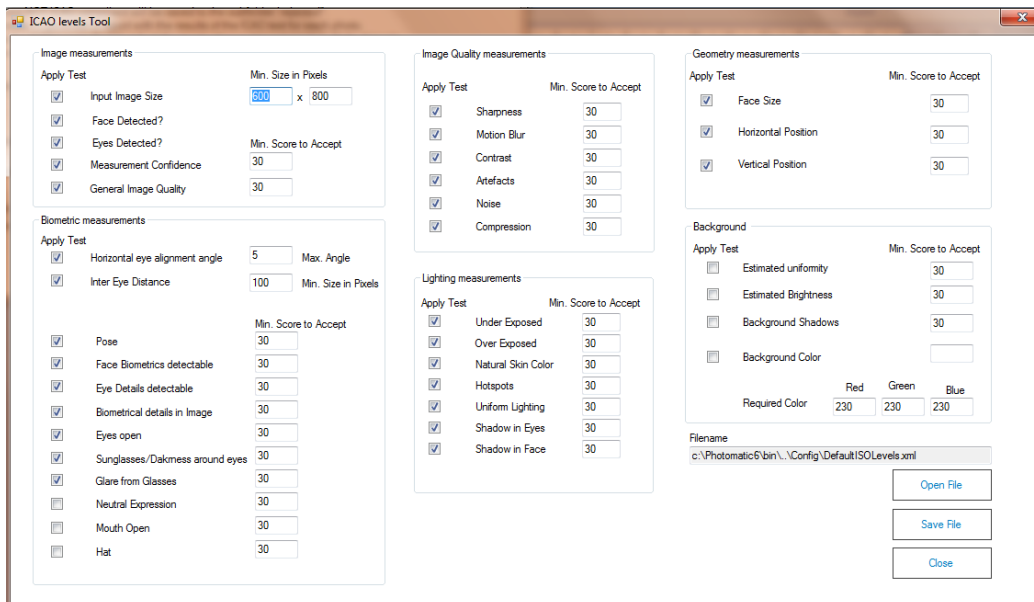
Click on the Config Tool button



Click on the *ICAO levels Template* button:



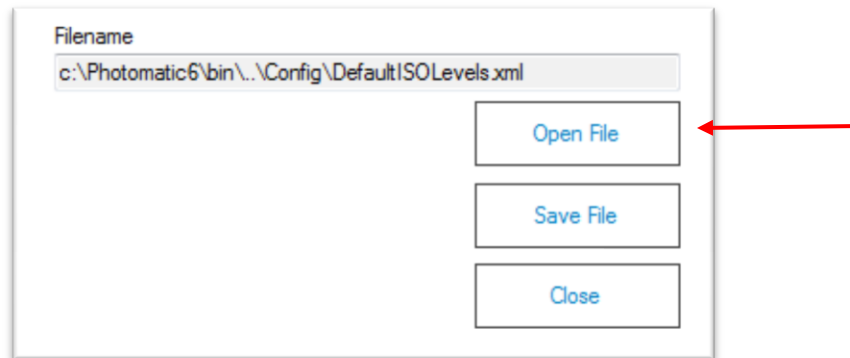
The tool will start showing the default settings:



The ICAO Test consist of many functions, each shown in the window. You can enable or disable every function separately. Just click on the checkbox. You may also adjust the rejection level of each function. Most ICAO Test functions have a default rejection level of 30. The levels range from 0 – 100. 100 means a perfect score, 0 is the lowest score. A rejection level of 30 means that an ID photo is rejected if a test score is **lower** than 30.

How to modify an ICAO level Template?

The tool that allows you to create and modify existing ICAO levels templates. Start with opening an existing template. Click on Open File:



Now select an existing Template. ICAO level templates are located in the folder c:\Photomatic6\Templates\ICAO.

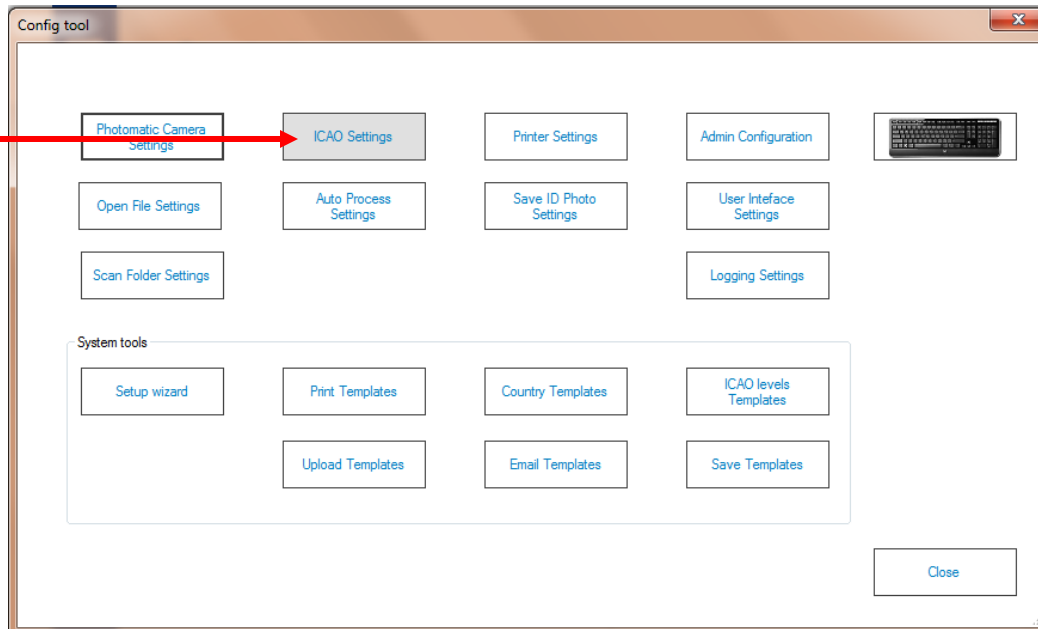
Select for example the **DefaultISOLevels** file. The tool will open the settings of this file and show it by enabling/disabling the function and modifying the rejection levels as they were set in this file.

Now you can change the levels by enabling or disabling functions and changing rejection levels. When you are done save the settings to file, but rename it to for example **MyNewISOLevels**. Do not overwrite the DefaultISOLevels file.

Now you should change the ID station settings to start using your new template:

Use a new ICAO level Template

ID station uses the *default* ICAO levels template. If you want your ID station to use another template, start the Config Tool again and click on the ICAO settings button:



The ICAO settings allow you to change the ICAO levels template file. Click on Browse to select another file. Click on Save to save your new settings.

