

How To : The ICAO Test feature

Introduction

How do you know if the ID photo you are going to print or save is OK? How do you instruct personnel about the latest passport photo specifications? What are the requirements for passport photos for other countries?

ID station features the ICAO Test, a software test function that checks every photo *before* it is printed.

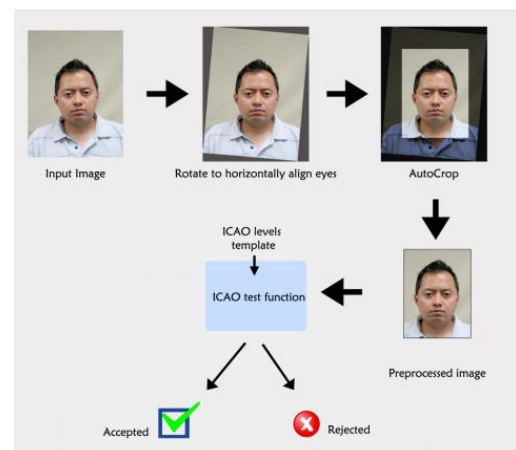


ICAO stands for **International Civil Aviation Organization**. One of the many duties of the ICAO is to make the specifications of passports and passport photos. ID station features the ICAO **Test** function. Every photo will be tested if it complies to the ICAO specifications. You may even print an ICAO test report for every ID photo. This document describes this excellent feature.

See <http://www2.icao.int/en/home/default.aspx> for more information about the ICAO organization.

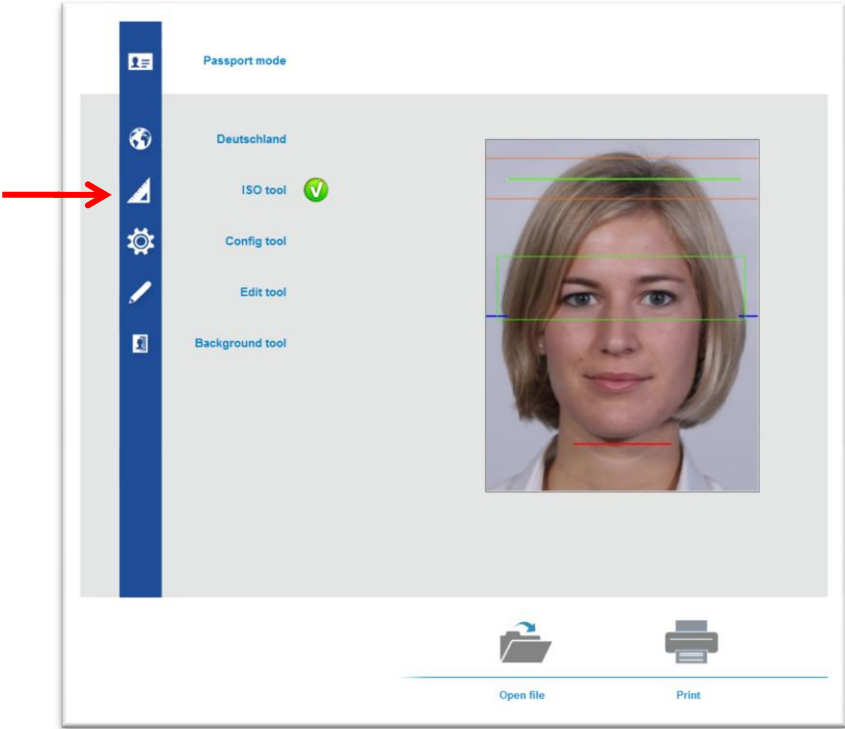
How does it work?

Capture some images of a customer. The captured images are automatically shown on your ID station. Select one preview by clicking on it. ID station will process that image. It will rotate the input image to align the eyes horizontally. Next, the image will be cropped (according the selected country template). The cropped image is the final ID photo and will be tested automatically using the selected ICAO template. The result of the test is either **accepted** or **rejected**.

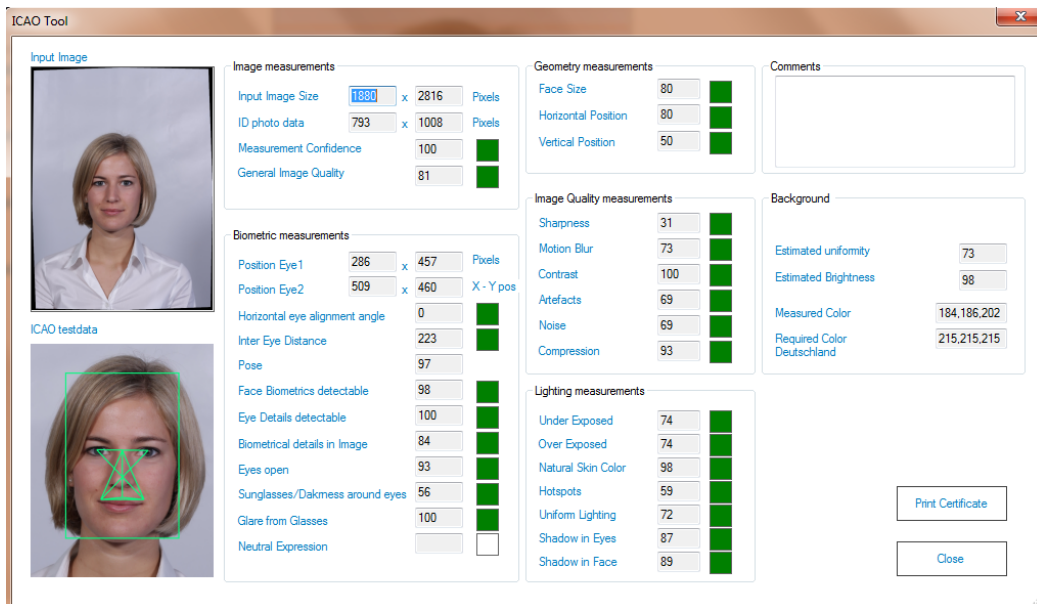


How do I print the ICAO Test results?

Click on the ISO tool button. ID station will start the ISO tool, showing the results of the ICAO test of the processed image.



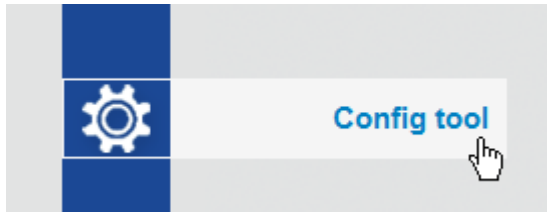
The ICAO test results are shown. Click on Print Certificate to print this test report. It's that easy!



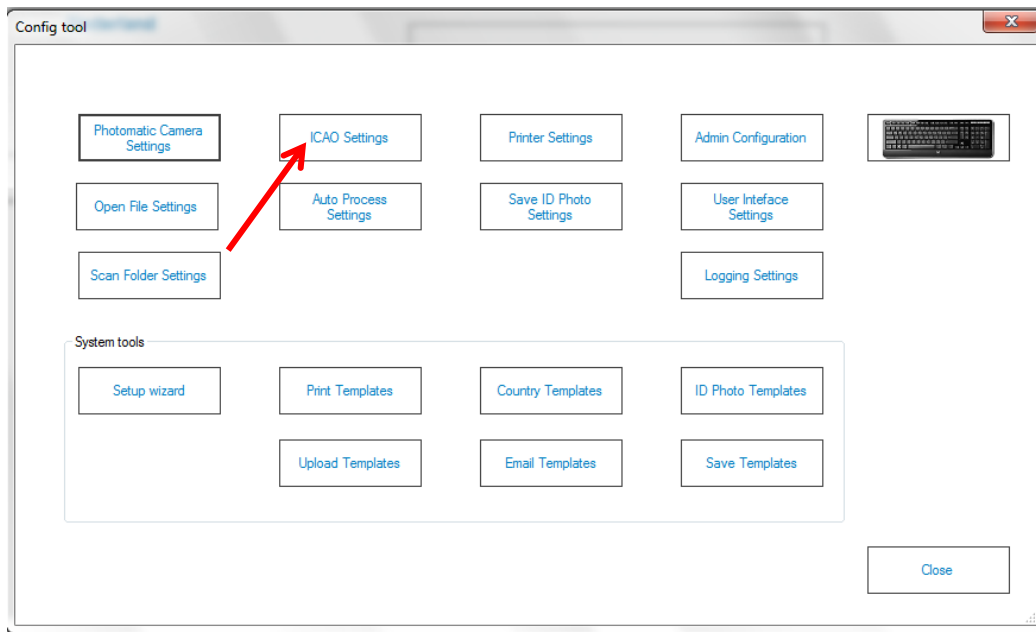
How to disable the ICAO Test?

If you do not want to apply the ICAO Test, disable the function in the Config Tool:

Click on the Config Tool button

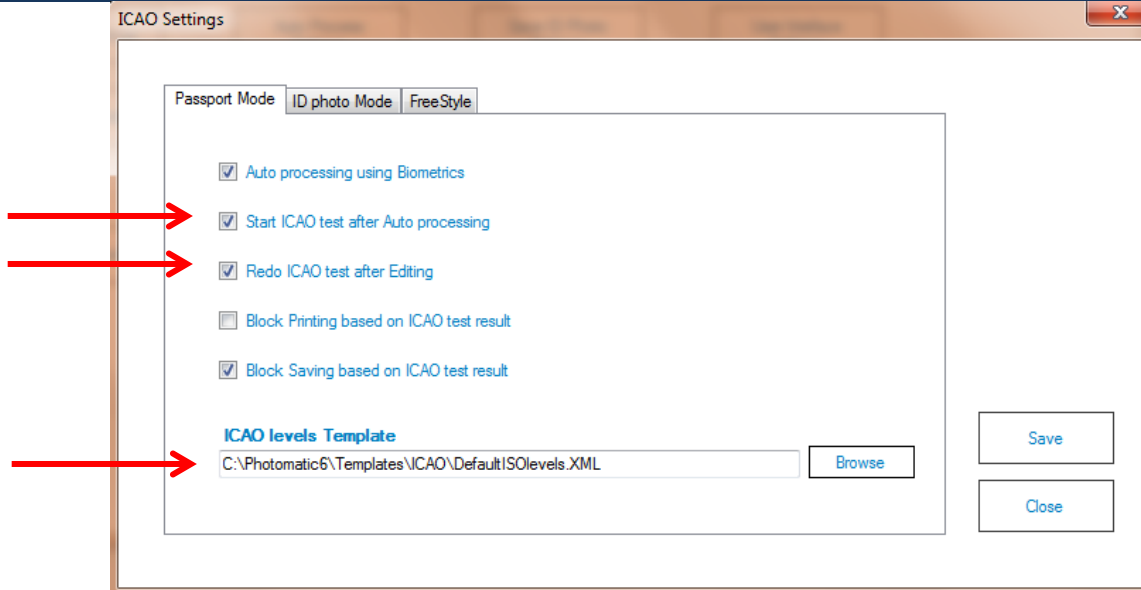


Click on the ICAO settings button



Now disable the following options:

- Start ICAO test after auto processing
- Redo ICAO test after editing



How to modify the ICAO Test feature?

The ICAO Test is using an ICAO level Template that defines which tests are applied and at which level the test will yield a **failed** result.

In the ICAO Settings tool you can select an ICAO level template.

The default template complies to the official ICAO standard (ISO/IEC 19794-5) but you may create your own templates in which some tests are disabled and or some rejection levels are modified. For example, if you want to disable the "Sharpness" test because it renders unreliable results you can do this by selecting a template file in which this test is disabled.

The tool that allows you to create and modify ICAO levels templates is called the **ICAO level template tool**. This tool has its own How to page. Please read this How to page if you want to learn more about this tool.