

How To : Use the Eye-Fi card



Introduction

ID station comes with an Eye-Fi card that allows you to work with any camera with an SD card slot. Just insert the SD card into your camera and shoot. Every picture will automatically be transferred to your ID station.

This document describes how to use this excellent feature.

Step 1 : Insert the Eye-Fi card into your camera

Insert the Eye-Fi card into your camera. Note that your camera should have an **SD-** card slot!



Step 2 : Preparation

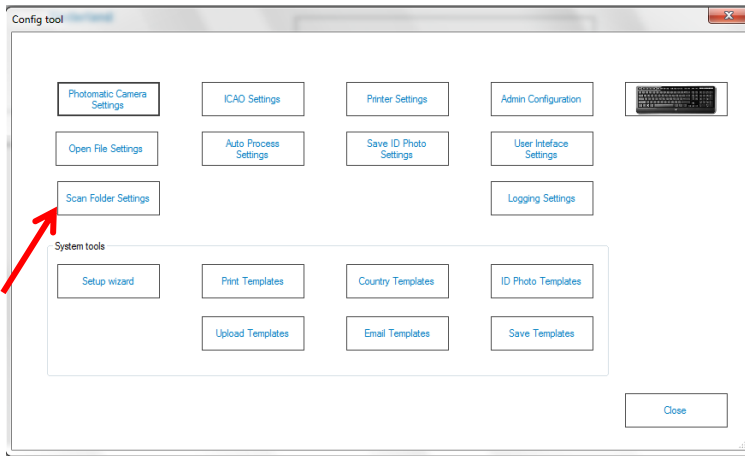
Software

First of all, you need to set the ID station software to use the wireless mode. This the default setting, so if you are just starting using your ID station you probably don't have to change anything. Still, to check the software settings follow these steps:

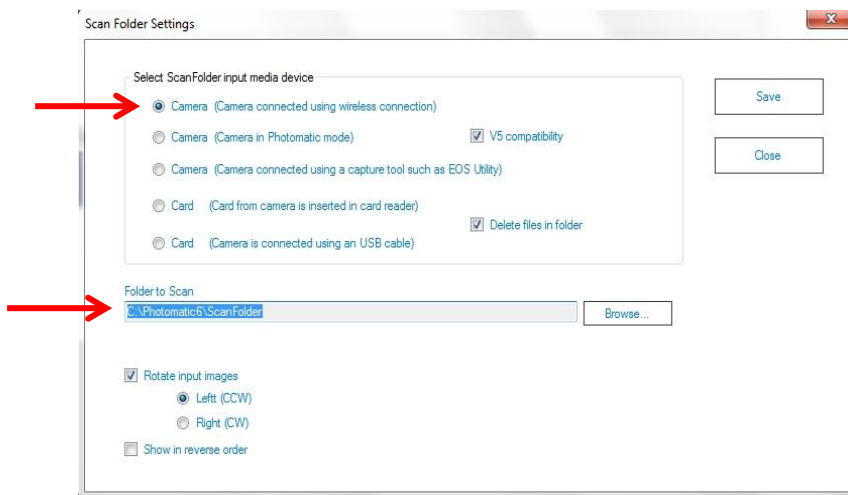
1.



2. Click on the ScanFolder settings button



3. Now select the *wireless connection* method and check if the Folder to Scan is set to *c:\Photomatic6\ScanFolder*



4. If you are using your camera in Portrait position you can automatically rotate the input images by setting the Rotate option and choosing Left or Right.

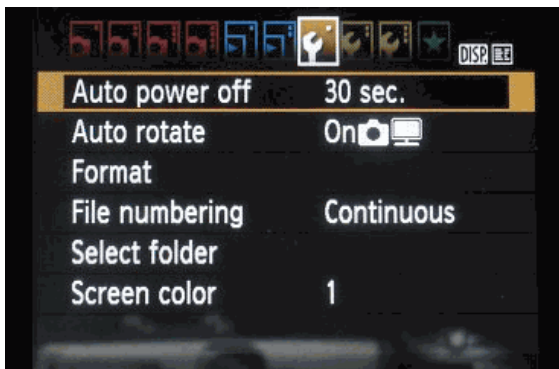
5. Save the settings and close the Config tool.

Check your camera

You may need to change a setting in your camera. The settings that you should check are:

1. auto power off
2. enable/disable WiFi/Eye-Fi

The **Auto power off** setting should be checked because when the camera is powered off during the transfer of pictures the wireless communication will not work. Therefore NEVER switch off your camera while pictures are being transferred and make sure the camera does NOT power itself off while transfer is in progress. A safe time for the Auto power off settings is at least 30 seconds, but preferably a couple of minutes.



Obviously is you are using batteries make sure the batteries are fully charged!

Canon EOS cameras.

The Canon EOS 1100d for example has an option to enable or disable Eye-Fi. Unfortunately the default setting is DISABLED. So if you have purchased a Canon EOS1100d and you put the Eye-Fi card in the camera the images will NOT be transferred, because the camera is set to disable the Eye-Fi card from sending images.

1. Turn the camera on.
2. Click on the menu button
3. Click on the wrench icon
4. Scroll to Eye-fi settings and click on the *set* button
5. Choose by Eye-fi trans. for enable by clicking on the set button again, and selecting **Enable**

Nikon camera's

By default the Nikon camera Auto Meter-Off settings are quite strict. This is bad for the wireless connection because the card needs some time to transfer pictures to the ID station. If in the meanwhile the camera goes to sleep mode, there could turn up some problems with the transfer. To change this, see the instructions below.

Step – 1

Turn camera power on.

Step – 2

Press the MENU button.

Step – 3

Use the Left Arrow ◀ followed by the Down Arrow ▼ or Up Arrow ▲ to select the Tool (Setup) ⚙ menu and press the Right Arrow ▶ button.

Step – 4

Under the Tool menu, use the Up Arrow ▲ or Down Arrow ▼ to highlight the CSM.Setup menu and press the Right Arrow ▶ button.

Step – 5

Use the Down Arrow ▼ to select Detailed or Full (depending on model) and press the Right Arrow ▶ button.

Step – 6

Press the Left Arrow ◀ button followed by the Up Arrow ▲ button to highlight the Pencil/Custom Setting menu and press the Right Arrow ▶ button.

Step – 7

Use the Down Arrow ▼ button to highlight Auto Meter-Off and press the Right Arrow ▶ button.

Step – 8

Use the Down Arrow ▼ button to highlight 30 min (or the greatest amount of time allowed) and press the Right Arrow ▶ button.

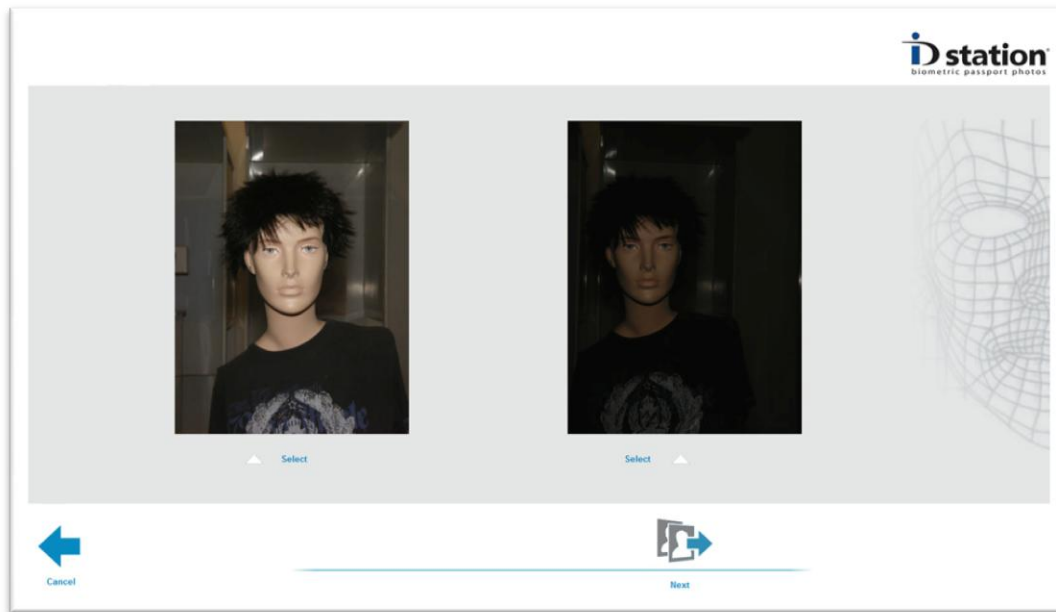
(See for specific camera instruction <http://support.eye.fi/camera-questions/power/optimize-camera-power-settings/>)

Step 3 : Take a picture

Now turn on the camera and take a picture. A few seconds after the picture has been taken the SD card will start transferring the picture to ID station.

Step 4 : Select the captured image

Every picture taken will automatically be transferred to your ID station and be shown in the preview window:



The preview window only shows two captured images at once. Browse by clicking on the **Next** and **Previous** buttons.

Start processing an image by clicking on the preview. ID station will automatically convert the captured image into an ID photo!

If the previews are rotated, change the settings as described in step 2.

If the images are not being transferred, please read the "[Troubleshoot Guide EYE-FI CAMERA](#)".