

How to Read Cards

Introduction

Another procedure of taking pictures are importing them into the ID station is through the camera's memory card. The working procedure is simple: insert the card in your camera and take a couple of pictures. Now take out the card and insert it in the card reader of your ID station.



To setup this as a new procedure please follow these steps:

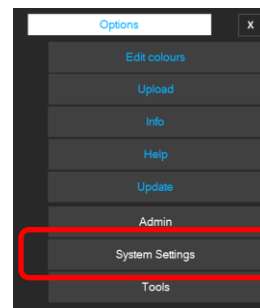
Change the way the ID station scans for photos

First of all we need to change the "input mode" of your ID station. Usually the input mode is "wireless" or "Photomatic". To change the input mode go to the System Settings. This can be found under the Options menu:

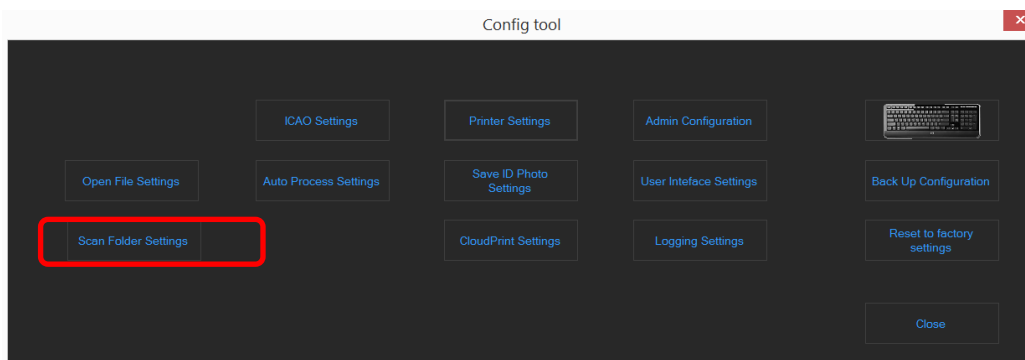


Step 1: First put the SD card in the card reader on the left side of the ID station.

Step 2: Go to "Options" and click "System Settings"



Step 3: Please select "Scan Folder Settings"

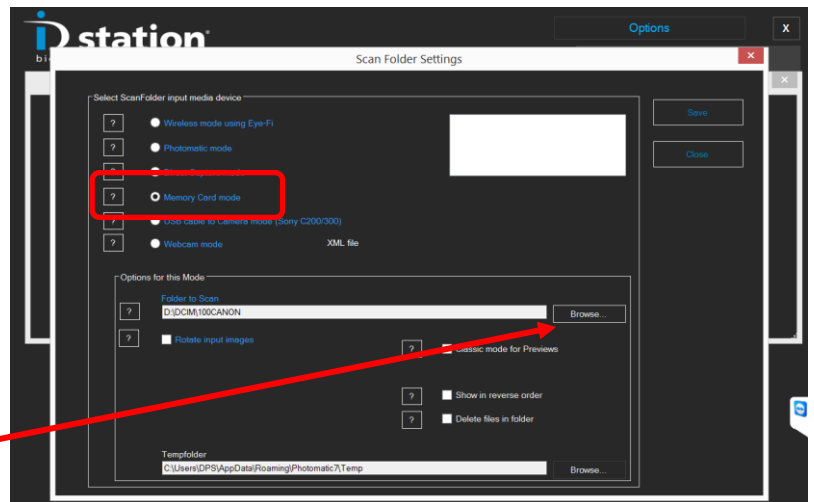


Now you will see all the "input mode" options.

Select the "**Memory Card mode**"

Now the pictures on the memory card are stored in a specific folder, usually starting with "DCIM".

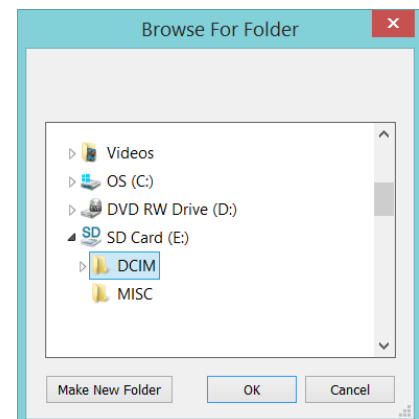
You can preset this folder so that the software will automatically look in the right folder on the memory card. For this, click on the "Browse" button



Now select the folder containing the pictures on the SD card in the DCIM directory. The actual name will depend on the type of camera you're using. Click on OK to set the folder name.

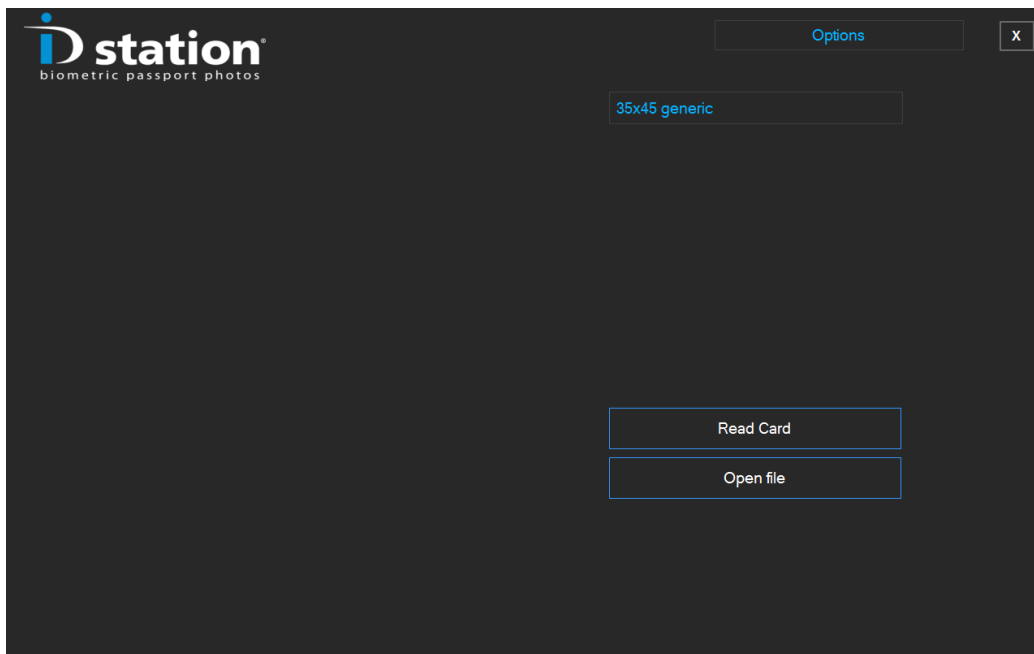
Choose "Save" in the Scan Folder Settings and after this close the Config Tool.

Now the ID station software is configured to read memory cards as input mode. It will no longer accept wireless connections nor will it look for camera connections.



Working with a memory card

This is standard the setup for "Read Card"



The working procedure is simple: insert the card in your camera and take a couple of pictures. Now take out the card and insert it in the card reader of your ID station.

Click on the "read card" button. The software will start scanning the input folder on the memory for pictures.

This input folder is the folder you selected in the previous step of this manual. If there are no pictures, you probably have selected the wrong input folder!

In that case, please try again.

Otherwise, select a preview and it will be processed automatically.

